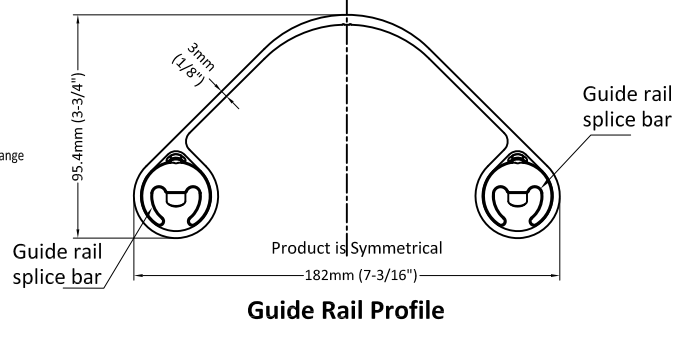
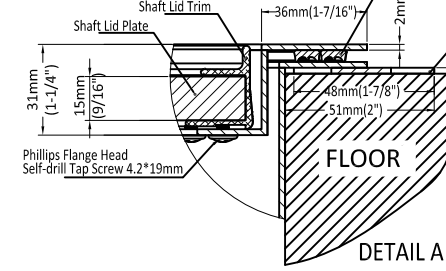
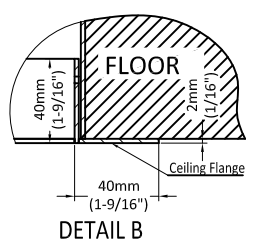
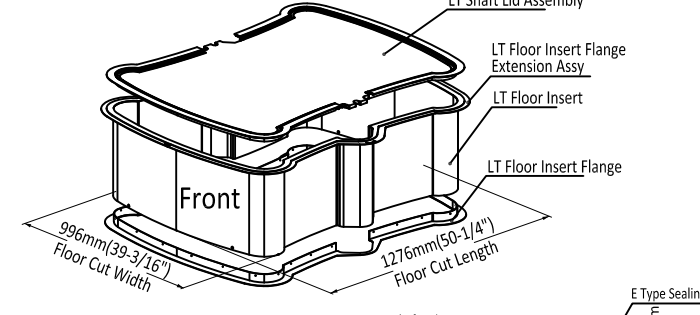
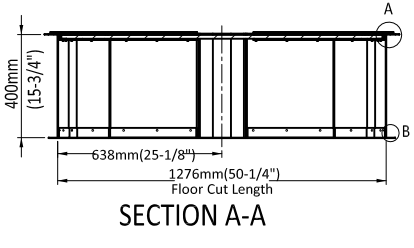
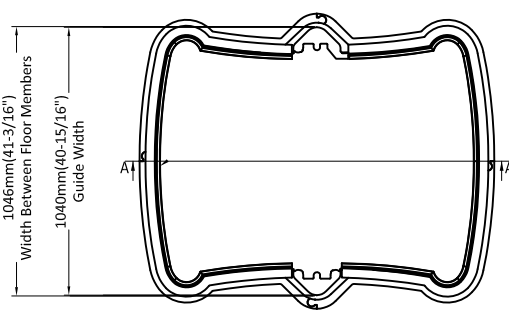
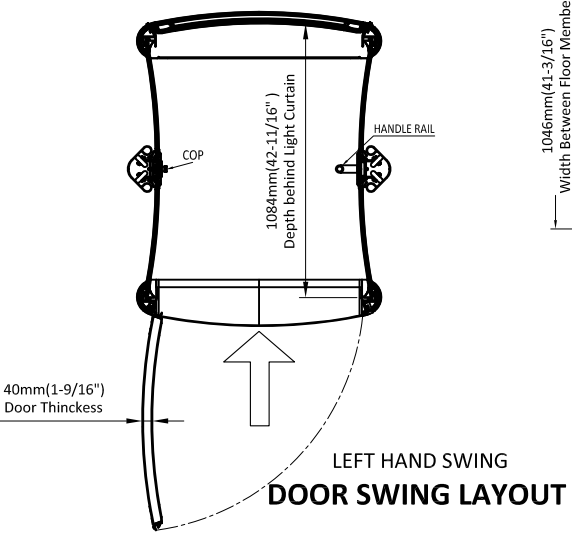
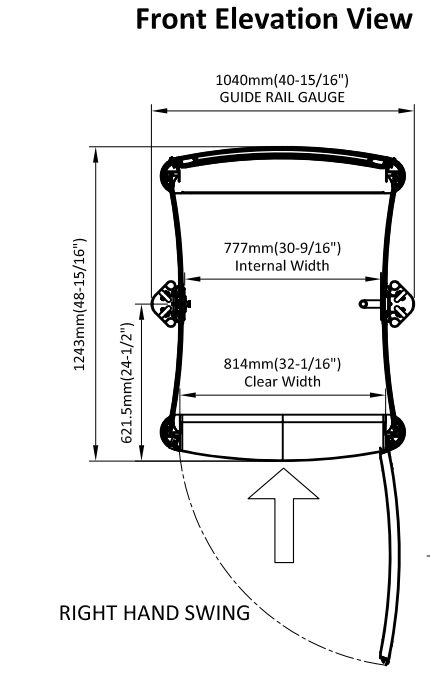
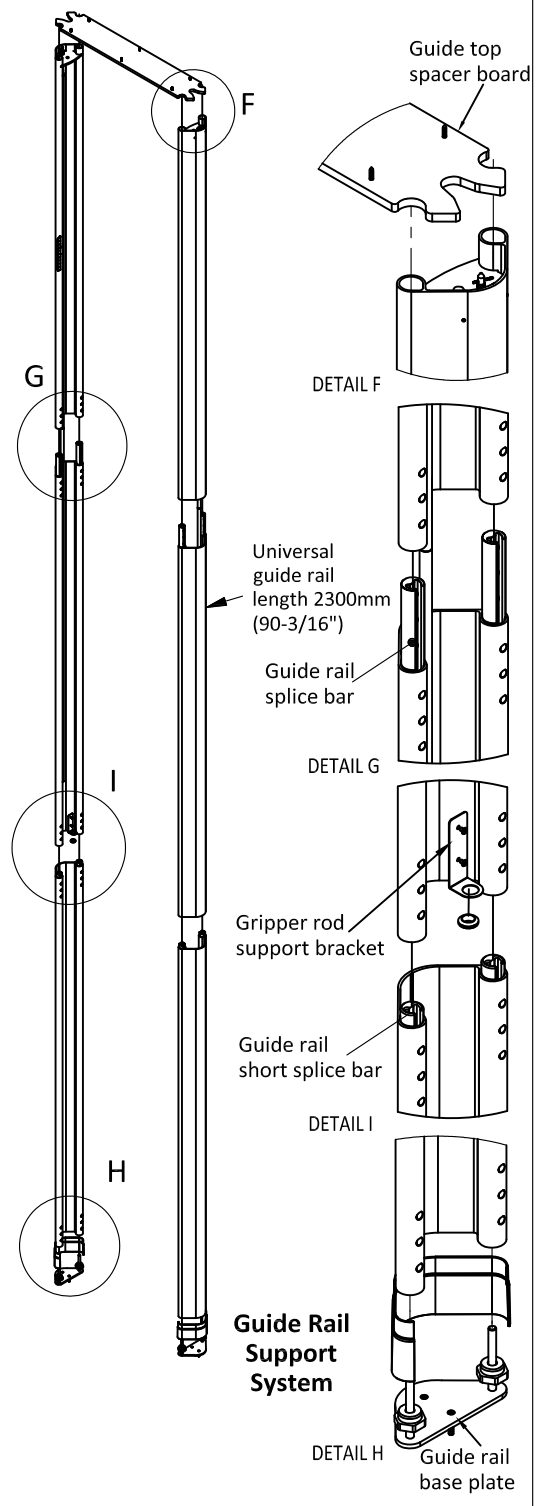
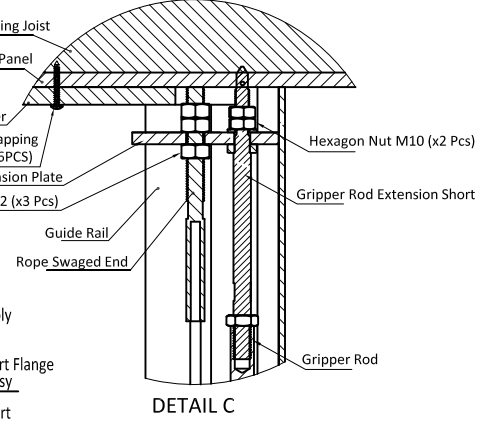
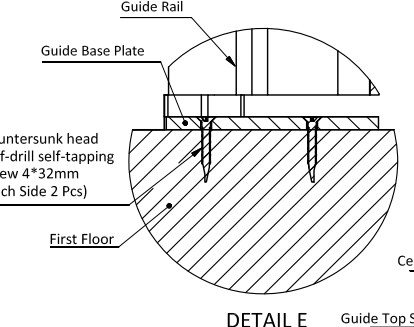
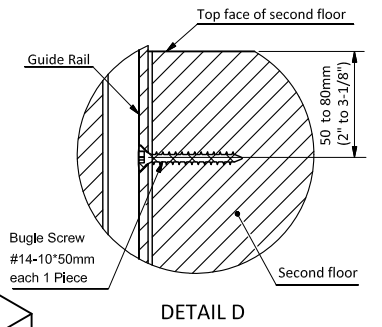
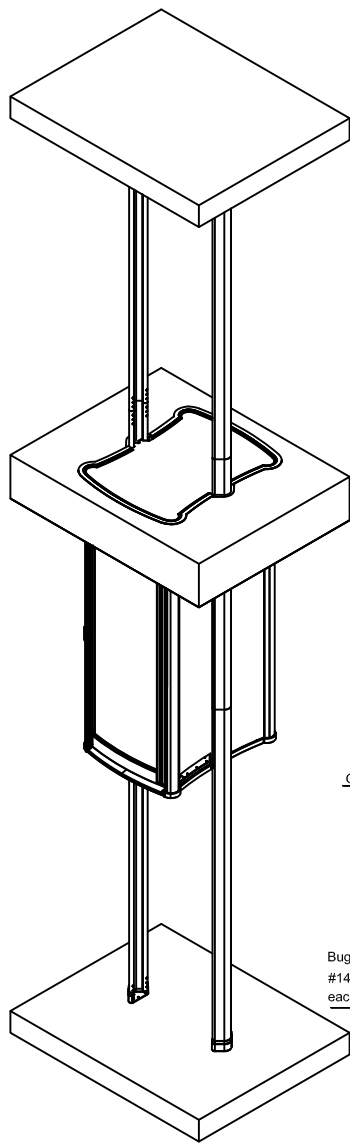
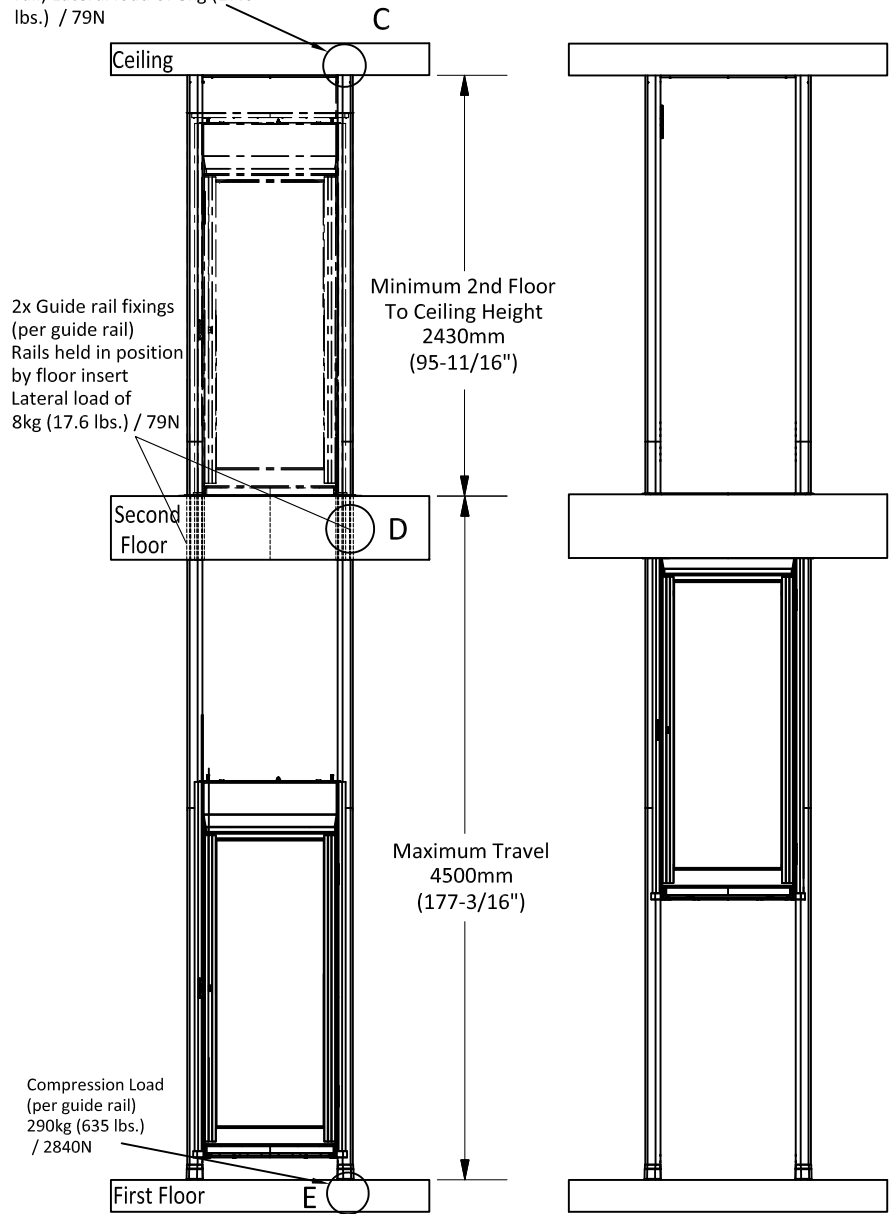


No compression Lateral load of load on ceiling (per guide rail)
Lateral load of 8kg (17.6 lbs.) / 79N

PRINT MAY BE REDUCED - DO NOT SCALE.

GENERAL DATA		MACHINE EQUIPMENT	
Type:	Trio Homelift	Manufacturer:	Nord Gear Ltd
Capacity:	500 lbs.	Type:	SK9016.1 VL-80S/4 BRE10 HLSR O/U/H (Bevel gear unit)
Speed:	19.7 ft/min	Motor Power:	0.55 kW
Maximum travel:	14.76 ft	Output Speed:	1375 / 15 rpm
Car floor area:	11.1 sq ft	Reduction:	02:37:0
Landings:	2	Output Torque:	339 Nm
Car entrances:	1 in-line	Brake torque, manufacturer:	10 Nm; Precima
Operation:	Constant pressure	Drum, manufacturer:	Shanghai Hanzhou Machinery and Equipment Co. Ltd
		Material:	Cast Iron
		Diameter:	8.856 in (225mm)
		Diverter pulley, manufacturer:	Yangzhou Saierda Nylon manufacture Co. Ltd.
		Material:	Nylon
		Quantity:	2
LIFT WEIGHT		ELECTRICAL	
Hoist unit (machine room above car):	289.3 lbs.	Main power:	220-1-60 HZ - 20 AMP
Car body:	330 lbs.	Signal voltage:	24 VDC
Total empty lift:	619.3 lbs.	Emergency lowering system:	Battery 12 V - 7 AMP, with emergency lighting
SUSPENSION ROPES		PLC, manufacturer:	Mitsubishi
Manufacturer:	Pfeifer Drako	Type:	AL2-24MR-D
Type:	Drako 7 x 19 WSC (Mil Spec 83420)	VFD, manufacturer:	Mitsubishi
Dimensions:	0.2362 in (6mm)	Type:	FR-D720
Min. breaking force:	29.0 kN	SIGNAL/SAFETY FEATURES	
GUIDE RAILS		Landing controls:	Remote transmitters hold-to-run buttons, with back lights
Manufacturer:	Stiltz	Car controls:	Hold-to-run call buttons, with back lights
Type:	Specific Aluminium Alloy (AA 6063) extrusion	On/off and reset switch:	Keyed on car operating panel
Size:	Overall depth 7.165 in, width 3.756 in	Emergency stop:	Push emergency stop switch with alarm siren
CAR		Emergency signalling device:	Two way voice communication telephone, to landline
Type:	Centrally guided, 1 or 2 entrances	Car indicator lights:	Over-speed, over-load, out-of-balance, bottom-top obstruction
Suspension:	2 ropes, drum	Car Lighting:	LED strip lighting in ceiling and LED puck lighting cab floor
Walls:	Sides have full walls.	Top of car/machine room:	Load sensitive top plate above lift
Door:	Manual operation swing full height doors.	Bottom of car:	Obstruction sensor pad at base of lift car
Floor surface:	In accordance with clause 5.3.1.1.1		
Apron minimum vertical height:	2.11 in		
Handrail:	Included as standard		
APPLIED COMPONENTS		Car door contact, manufacturer, type:	Kronenberg, PZ 73
Safety gear, manufacturer, type:	Stiltz, mechanical gripper plates and rods	UL certificate:	20141104-SA34041
Car door lock, manufacturer, type:	Stiltz (Kunshan) Limited, ES 20M	Machine brake, manufacturer, type:	Precima
UL certificate:	102448987CRT-001	UL certificate:	1478630



Trio Alta

The information contained herein is the exclusive property of Stiltz Ltd. and shall not be distributed, reproduced, or disclosed in whole or in part without prior written permission of Stiltz Ltd.

Stiltz

© Stiltz Ltd. 2013
 Drawn Guangji Chen Date 2019/05/23
 DIMENSIONS IN MM UNLESS OTHERWISE NOTED
 THIRD ANGLE PROJECTION - AS 1100

TITLE Trio Alta ASME Installation Layout
 Dwg No. SCALE: PAGE 1 OF 1